



1

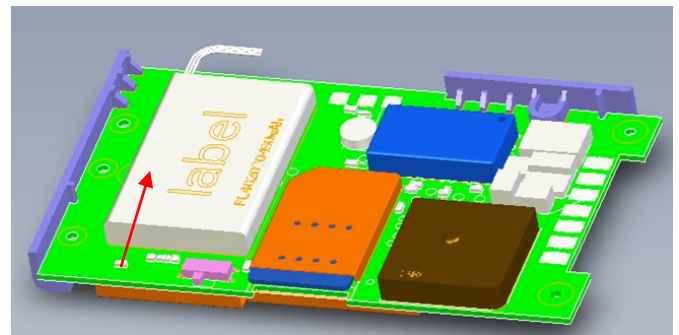
Check GV50M device

Use GV50M USB data cable to configure the device. The cable is an optional accessory may not be delivered along with the device.



2

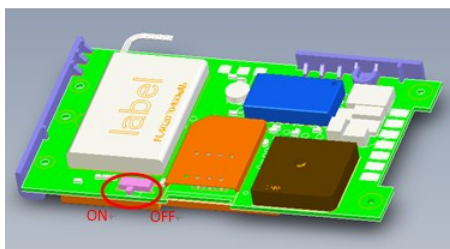
Install the SIM card.



3

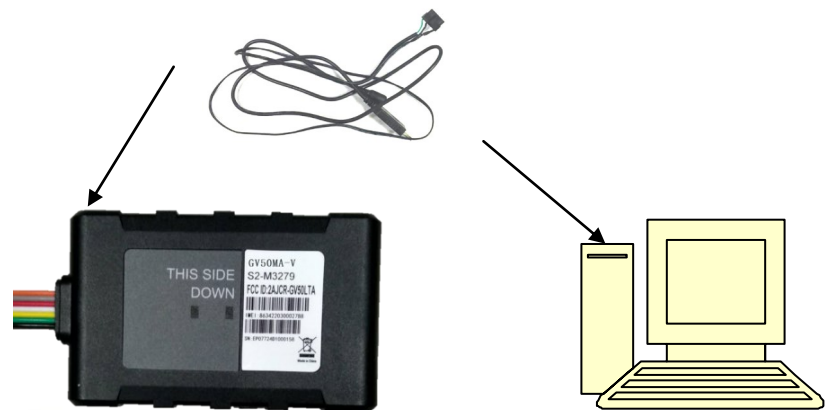
Switch on the Backup battery

To use the GV50M backup battery, the switch must be at the ON position. The switch and the ON/OFF position are shown as below.



4

Connect GV50M to the computer by the USB data cable.



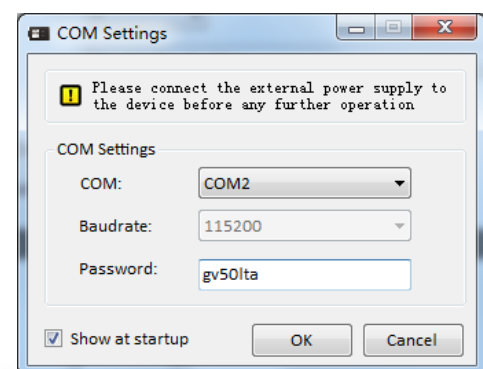
5

Find "PL2303_Prolific_Driverinstaller_Vxxxx.rar" and choose the suitable driver for your computer system. If you have already installed it, please go to Step 6.



6

Find "Queclink GV50M_Manage_Tool_Vx.x.exe" in develop suit and run it to configure the running parameters of GV50M. Please refer to Page 2 for details.



7

Better place the GV50M under the open sky and face the side with indication LEDs to the sky.

This is the down side



8

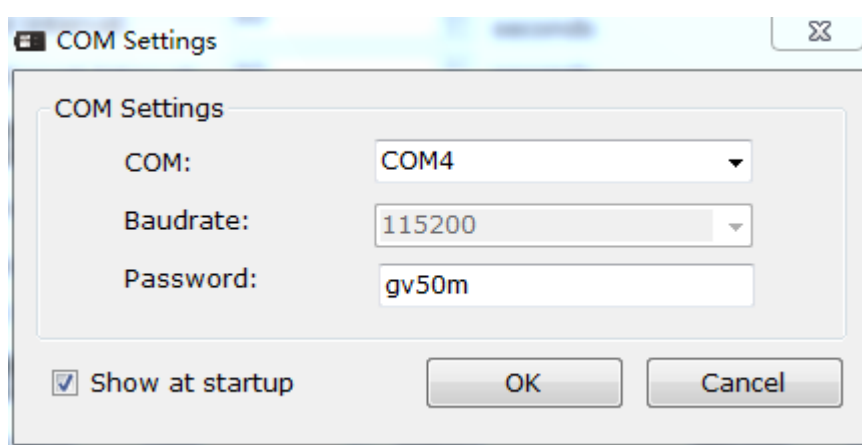
Use the GV50M extension cable to connect device to the car.



Page 2 : PC Manage Tool Quick Start

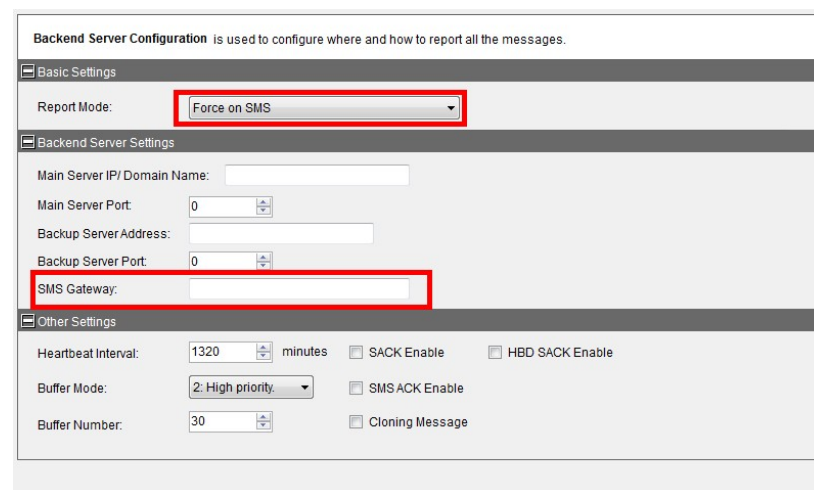
1

Run manage tool. Select correct COM port and input default password "gv50m". Then press OK.



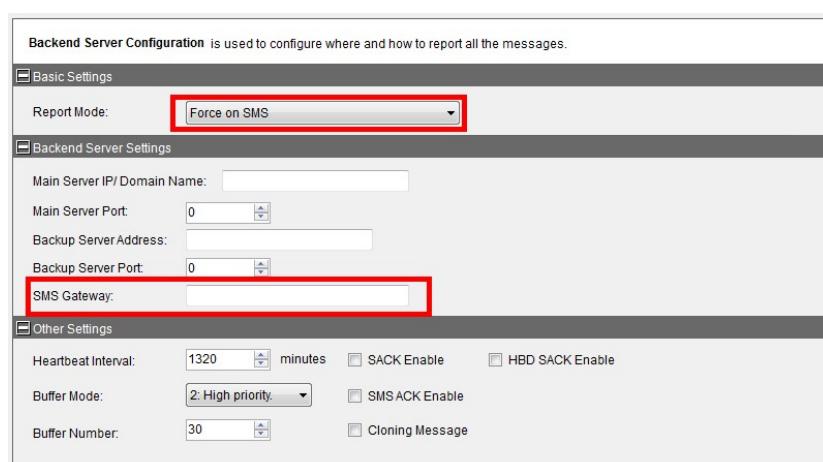
2

If you want to test the GV50M by SMS, set "Report Mode" to "Force on SMS" and input the phone number which you want to receive the SMS from GV50M. After that you can go to Step 6. Otherwise please go to Step 3.



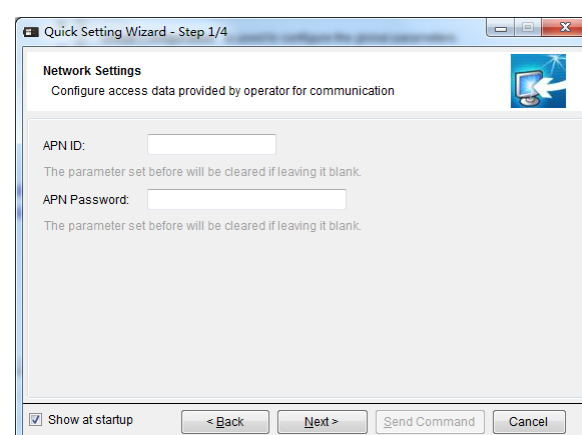
3

Set "Report Mode" to "TCP Short Connection". Input the IP address and port number of the backend server. Please make sure the IP address can be accessed by internet and the data sent to this address can be received.



4

Please contact your SIM card provider and get the User information for network. Input it in GTBSI setting. Note: APN cannot be empty.

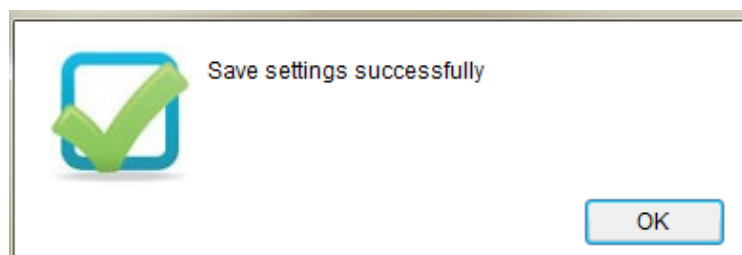


5

Press the "Send" button and update the parameters of GV50M. Then the GV50M can report information to your backend server or SMS receiver. Note: These commands can also be sent to GV50M by SMS.

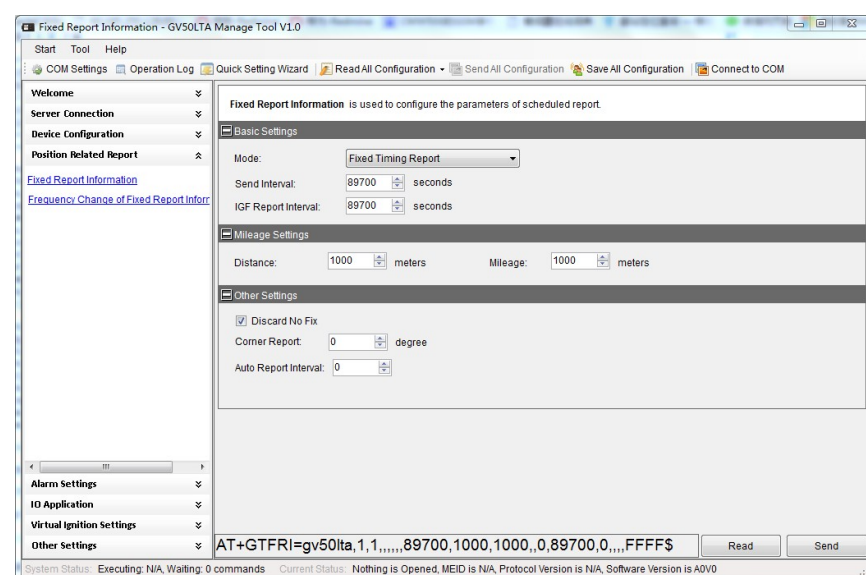
AT+GTFRI=gv50lta,1,1,,,,,89700,1000,1000,,0,89700,0,,,,FFFF\$

Command has been accepted when you see the success window.



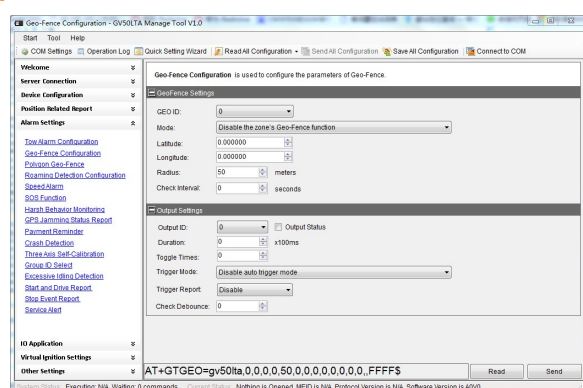
6

Set the parameters of scheduled fixed timing report so that the GV50M will report it's position to backend server periodically. Press "Send" button to update the parameters. Following screen shot shows how to configure the GV50M to report it's position every 3 minutes.



7

The following screen shot shows how to create a Geo-Fence. Press "Send" button to update the parameters.



After these steps, GV50M will have some basic tracking functions such as scheduled timing report and Geo-Fence. For other advanced functions of GV50M, please refer to "GV50M @Tracker Air Interface Protocol" or visit our website.

<http://www.queclink.com>
sales@queclink.com